



# Executive Summary for Accounting Services Sample

Friday, September 25, 2009

➤ Detailed Aged Receivables

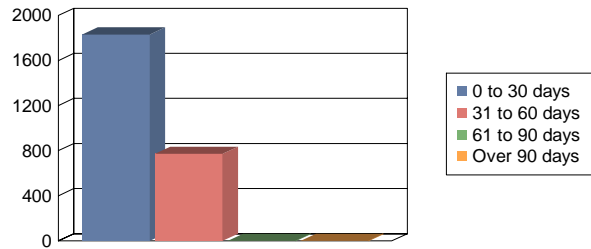
➤ AP Open Invoice Aging

➤ Detailed Prepaids

## Receivables Summary

Aged from 9/25/2009

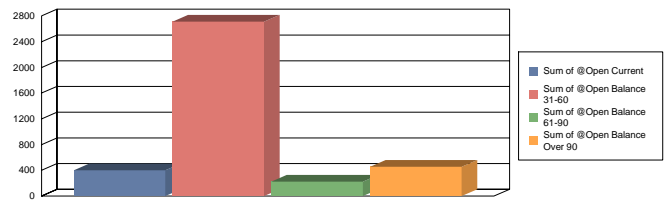
|                |            |
|----------------|------------|
| 0 to 30 days:  | \$1,832.00 |
| 31 to 60 days: | \$772.00   |
| 61 to 90 days: | \$0.00     |
| Over 90 days:  | \$0.00     |
| Balance:       | \$2,604.00 |



## Aged Payables Summary

Aged from 9/25/2009

|                |                 |
|----------------|-----------------|
| Current        | 401.16          |
| 31 to 60 days: | 2,710.78        |
| 61 to 90 days: | 223.00          |
| Over 90 days:  | 160.00          |
| <b>Total</b>   | <b>3,789.94</b> |



## Operating Account Summary

|                        |             |
|------------------------|-------------|
| Bank Balance:          | \$-4,923.12 |
| Open Checks:           | \$0.00      |
| Open Deposits:         | \$10,881.00 |
| Open Withdrawals:      | \$0.00      |
| Open Adjustments:      | \$0.00      |
| Total Open:            | \$10,881.00 |
| Subtotal:              | \$5,957.88  |
| Unposted Transactions: | \$0.00      |
| Register Balance:      | \$5,957.88  |

## Reserve Account Summary

|                        |             |
|------------------------|-------------|
| Bank Balance:          | \$0.00      |
| Open Checks:           | \$0.00      |
| Open Deposits:         | \$0.00      |
| Open Withdrawals:      | \$0.00      |
| Open Adjustments:      | \$2,500.00  |
| Total Open:            | -\$2,500.00 |
| Subtotal:              | -\$2,500.00 |
| Unposted Transactions: | \$5,000.00  |
| Register Balance:      | \$2,500.00  |

## Operating Account Balances

| Account    | Account Title  | Balance    |
|------------|----------------|------------|
| 10-1121.01 | Cash-MM-UST    | 100,000.00 |
| 10-1123.01 | Cash-TBill-UST | 50,000.00  |

## Investment Account Balances

| Account    | Account Title              | Balance    |
|------------|----------------------------|------------|
| 10-1317.00 | Special Assessment Funds   | 60,465.64  |
| 10-1320.01 | Replace Res-MM-Citizens    | 118,392.70 |
| 10-1323.21 | Replace Res-Other-MHFA     | 14,495.00  |
| 10-1390.01 | Cap Reserve-TBill-Citizens | 99,850.00  |